

Country's Best

BONUS! [24 pages]
Smart Designs
for Winter Weather

Cabins

Welcome Home

Design
an Inviting
Entryway

small
kitchen
solutions

Be the ultimate

Holiday
HOST

- Award-Winning Design Ideas
 - Renovation Revelations
- [SEE THE INCREDIBLE BEFORE & AFTER PHOTOS]

DECEMBER 2012

\$5.99US \$7.99CAN



0 70989 39206 9
countrysbestcabins.com

please recycle this magazine

Display until December 18, 2012

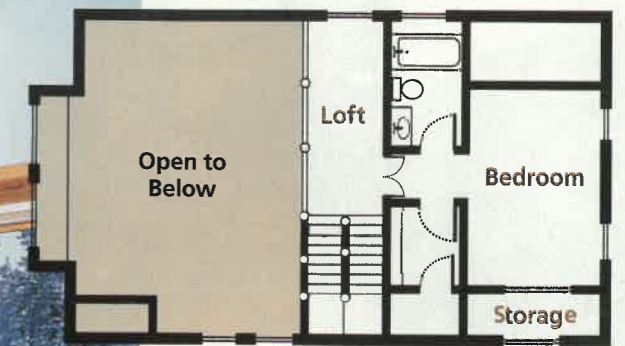


MOUNTAIN HOUSE

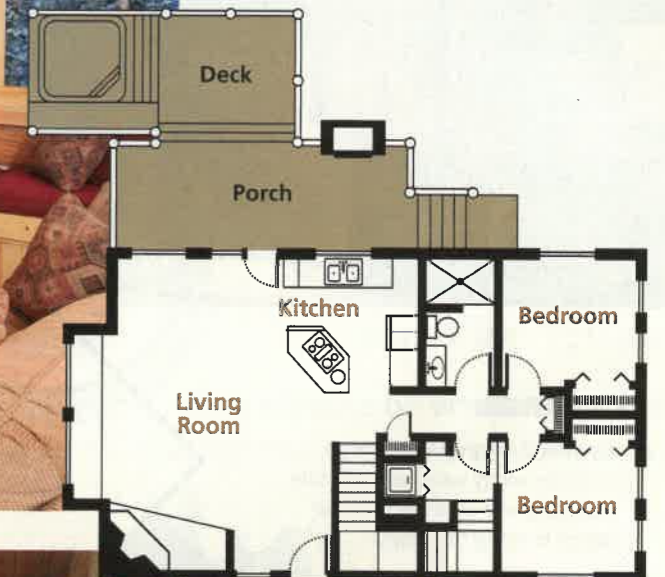
by Blue Ribbon Builders/
Van Bryan Studio Architects
(406-995-4579; blueribbonbuilders.com/
406-586-4777; vbsa.net)
Square footage: 1,850

FEATURES:

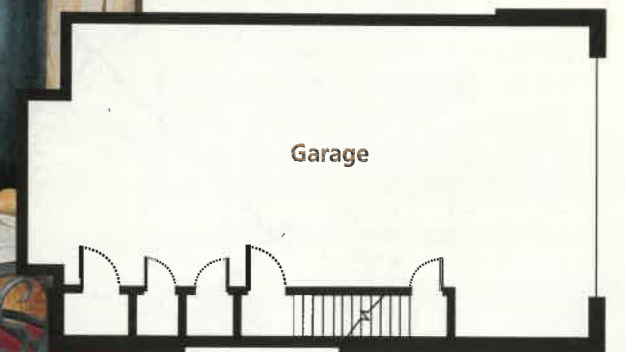
- This cozy cabin incorporates large-diameter Swedish-cope logs into its shell for a compact, insulated design.
- A post-and-beam configuration of double full-round logs supports the elevation's snowload of 185-plus pounds per square foot.
- Stone wainscoting around the cabin's foundation protects the logs against high snow banks in the winter.
- The corner fireplace acts as a reflector and throws heat back into the room.



UPPER LEVEL



MAIN LEVEL



LOWER LEVEL

J.K. Lawrence photos